

# **CHESS FEDERATION OF CANADA GOVERNORS' LETTER THREE 2007-2008**



Responses may be mailed, faxed or E-mailed to the Chess Federation of Canada, E-1 2212 Gladwin Crescent, Ottawa, ON, K1B 5N1, fax: 613-733-5209, E-Mail: [info@chess.ca](mailto:info@chess.ca)

**ATTENTION ALL GOVERNORS:** Anyone with an E-Mail address can have their Governors' Letter sent to them via E-Mail and save the CFC paper and postage costs. Please E-Mail [info@chess.ca](mailto:info@chess.ca) if interested.

**Deadline for submissions to GL#4 is Friday November 9th, 2007**

## **President's Message**

Once again I wish to thank our Executive members for their continued diligence: Stijn De Kerpel and Bob Gillanders for their work at the CFC office; Patrick McDonald for his efforts with our youth teams in Mexico and Turkey; and Lyle Craver would have had this GL out last week if not for me.

Much of my time since the last GL has been occupied by FIDE (Gerzhoy) and travel visa (Karpov) issues. Along the way I accepted an invitation to return to Khanty Mansiysk, Russia to serve as a Deputy Arbiter at the World Chess Cup from November 22 to December 16, 2007.

The situation with Leonid Gerzhoy at the World Junior tournament was most unfortunate. In a nutshell, we were aware that Leonid's flag situation was a problem, but we were unsure how it would play out. An official invitation was requested and received from the Organizing Committee, at which time a flight ticket was purchased. Leonid was en route to Turkey by the time that the organizers expressed their concern about his Israeli flag. I consulted with our FIDE representative Nathan Divinsky and talked at length with Ilia Bluvstein (who was in contact with Leonid and his family). My attempts to intervene on Gerzhoy's behalf were time consuming and unsuccessful, but he was allowed to stay and play for Israel in the tournament. After playing four rounds, Leonid unfortunately became ill with the flu, withdrew from the tournament and returned home.

Despite promises made by the CFC office to the Gerzhoy family in early July of 2006, the application to transfer Leonid's nationality from Israel to Canada was not submitted to FIDE until September of 2007. FIDE requires a minimum 10-month period for nationality transfers to take effect. FIDE is quite firm in this regard and no amount of pleading would change their decision. On a positive note, Michael Barron has graciously agreed to co-ordinate future FIDE "flag" transfers.

After some wrangling over obtaining a travel visa to Canada, GM Anatoly Karpov arrived for his keenly awaited training camp. This event was designed to launch the Karpov Academy in Toronto. The extended weekend (October 12 to 14, 2007) saw focused programming for our CYCC team and invited prominent Canadian youth players. A handful of our elite junior players were later engaged in a three day intensive session with GM Emil Sutovsky. Feedback from the weekend has been largely positive and evaluations continue to be received. Mr. Karpov and the team of trainers were quite impressed by the level of expertise shown by the participants. More than one player was identified as a serious contender for a medal in the upcoming WYCC in Turkey!

Thank you to those Governors who took the time to contribute to our discussion board Re: C.F.C. *Office Proposals*. A number of Governors feel it is premature to request proposals until the office's cleanup and reorganization have been completed. I believe that this injection of new ideas will at best result in a more efficiently run office, and at least provide a basis for comparison.

I am pleased to report that we have received bids from the FQE for 2008 for the CYCC and the Canadian Open (see appendix). I have asked Gordon Ritchie's team – from the 2007 ground breaking events in Ottawa – to conduct a review of the FQE bids. Please forward your comments to Mr. Ritchie for consideration as a part of this review.

Thank you.

Hal Bond, IO, IA  
President, Chess Federation of Canada

## **Message from the Secretary:**

In response to a query, GL contributions are welcome in either English or French and as much as possible will be printed verbatim though obvious typos will be corrected. While I have some reading knowledge of

French my skills are not up to providing translation. (I would certainly not object to any governor who wished to provide text in both languages) The situation between CFC and FQE has been contentious for years though my personal view has always been that this is the Chess Federation of Canada and thus the CFC should be as bilingual as our resources and talents permit. I emphasize that this is my personal view and not the official policy of the CFC.

It has been brought to my attention that there is an error in the minutes of the 2007 Annual General Meeting concerning the makeup of the Chess Foundation of Canada. While the record of who was elected is correct the following paragraph is not:

“As a result the 2006-2007 Board of the Chess Foundation of Canada is as follows: Barry Thorvardson (4 year term expires 2011), Lynn Stringer (4 year term expires 2010), Maurice Smith (4 year term expires 2009), Lyle Craver (4 year term expires 2008), Paul Leblanc (one year term expires 2007).”

This paragraph should have read:

“As a result the 2007-2008 Board of the Chess Foundation of Canada is as follows: Barry Thorvardson (4 year term expires 2011), Lynn Stringer (4 year term expires 2010), Maurice Smith (4 year term expires 2009), Lyle Craver (4 year term expires 2008), Paul Leblanc (one year term expires 2008).”

The intent of this is to say that trustee’s term of office ends at the CFC’s Annual General Meeting of that year – meaning that Paul and I cease being trustees at the next AGM unless re-appointed.

My apologies to anyone confused by the error which was all mine.

Lyle Craver  
Secretary, Chess Federation of Canada

### **Message from the Treasurer**

I am pleased to report steady progress towards our goal to create an efficiently run CFC office. We are not finished yet, but we can report the following progress:

We completed some basic computer maintenance that had long been neglected. This included installing anti-virus software, new data backup software, removing a defective hard drive, and upgrading RAM memory.

The latest rating update (Sept 26) was on time and with only minor errors. This was a great relief after the previous update went poorly. There are still some old issues with some Northern Ontario tournaments from many months ago that have been missed. I would like to hear about any other tournaments that have gone unrated.

The office has undergone a much needed cleanup and reorganization. Inventory items and supplies are now easier to locate. Financial and tournament records are now filed.

We resumed monthly mail out of membership renewal notices effective September.

I would like to extend a special thanks to Paul Roschman. Paul accompanied me on my last 2 visits to Ottawa and volunteered his time working at the CFC office.

Real progress is finally being made on the financial statements for April 30, 2007. I have met with our auditors and set targets to achieve our October 31 deadline. Final 2007 financial statements will be available for GL4. I appreciate the fact that the reports are long overdue and the anxiety that this creates.

Progress has been very slow due to the very poor state of the books. I will have lots to say about this later.

Once the previous yearend is complete, I anticipate being able to report quickly numbers for the current year.

And finally with regarding the 2006 CYCC, I recently met with the Kitchener organizers, Patrick McDonald and Hal Bond, to discuss and review their records. I have reviewed the CFC books and the report from then Vice President Halldor Palsson. I know understand the frustration expressed by Halldor at the AGM. I find both the organizers and the CFC to have kept very poor records. The account has been settled. The final financial report will accompany the yearend statements in GL4.

Respectfully yours,

Robert (Bob) Gillanders  
CFC Treasurer  
October 14, 2007

## Report from the Youth Coordinator

At this point we are well on our way to having our Youth Team all prepared and organized going to the World Youth Chess Championships in Antalya, Turkey.

We are also almost completely organized for a much smaller team heading to the North American Youth Chess Championships in Aguascalientes, Mexico.

The Websites for these two tournaments can be found here:

WYCC: <http://wycc2007.tsf.org.tr/>

NAYCC: <http://www.aguascalienteschess2007.com/>

While the team is small going to the NAYCC, it must be noted that this initiative is very strong from the Youth Organizers in British Columbia! Almost the entire team is from our western-most province! Thanks to a lot of effort from Andrei Botez and Ken Jensen, we have several sections of youth going to Mexico.

Our team going to the WYCC are as follows:

	Boys Rep	Girls Rep	Extra Players			
U-18	Ling Feng Ye	Gabrielle Nadeau				
U-16	Haonan Zhou	Sonja Xiong	Aman Hambleton	Victor Kaminski		
U-14	Arthur Calugar	Yelizaveta Orlova	Lloyd Mai			
U-12	Nikita Kraiouchkine	Myriam Roy	Nikita Gusev	Thomas Kaminski	Ashley Powell	
U-10	Christopher Knox	Rebecca Giblon	Jingzhou Lai	Donovan Zhao	Richard Wang	Jonathan Lai
U-8	Janak Awatramani	Kelly Wang	Aleksandra Milicevic	John Donkjas	Melissa Giblon	

Our Primary Coach is once again Yan Teplitsky.

Yan has done a great service to the Federation over the years as coach to the Youth Team at the WYCC.

This year, he has again gone above-and-beyond by saving the team and the Federation thousands of dollars by using his contacts to organize group rates for the flights for all going to the WYCC in Turkey. As Usual, this is a very difficult job with many of the families going (at this point we have a delegation of players and their families of 52 people going to Turkey!) wanting to have individual itineraries and different stop-overs to be able to attach family vacations to the trip.

On another topic, Yan, Our president Hal Bond and I have agreed to work together towards forming a “Karpov Chess Academy of Canada”. Mr. Anatoly Karpov himself will be an active participant in opening and continuing this remarkable chess institution to help our youth players develop beyond their current levels and continue the growth of chess in Canada.

The first event at the Karpov Chess Academy of Canada will be an intense “boot camp” open to the Youth team heading to the WYCC as well as certain select other youth players in Canada. Several big name GMs from around the world will participate in this event with the goal of much higher achievements for our Youth at the WYCC. Yan and I have talked for several years about trying to run such a boot camp, but it is only with Yan’s energy, determination and contacts that we have been able to get to this point of actually enacting this Academy. Canada’s thanks are for you Yan!

October 11, 2007 addendum to Youth Coordinator report.:

I have returned from the North American Youth Chess Championships held in Aguascalientes, Mexico over the Canadian Thanksgiving weekend.

I am very impressed with the organizers in Mexico. They had a terrific partnership with their government, particularly the State government. I acted as an arbiter and was able to see first hand the level of professionalism that they were able to work with.

Right from the Opening ceremonies, the effect of government support was quite evident with several different branches all “pitching in” – including Tourism and Sports.

Throughout the event, multiple media were conducting interviews and filming and photographing the event in progress – Local TV, Newspapers and Radio were QUITE involved.

MonRoi were on hand as were DGT technology being used for MANY live games being broadcast.

The Closing ceremonies were also quite impressive with the showing of a professionally produced video presentation of the event – very exciting and impressive!

Canada had 6 players and special Congratulations are due to Alexandra Botez, Canada’s first Female Candidate Master won by taking First place in the Under 12 Girls section!

All our players performed very well against a surprisingly good opposition.

The US sent 11 players and their Boys Under 16 also won first place securing a Candidate Master title. (Robert Lau).

Based on this tournament, I would like to recommend that Canada support future NAYCCs more fully. Our Continental FIDE President, Jorge Vega has personally asked that Canada consider running a future NAYCC. I am proud to say that he is looking to Canada before the US for such a tournament. (He has also previously asked that we consider a Pan American event too.)

Patrick McDonald  
Youth Coordinator - Chess Federation of Canada  
[patrick@psmcd.net](mailto:patrick@psmcd.net)

## **RESULTS OF VOTING:** None

### **Motions for Final Vote:**

**Motion 2008-01: Moved (*Pierre Dénommée* / *Lyle Craver*)** That the CFC Handbook Tournament Rules section be replaced as per Appendix 4 (see below)

(Editorial note: Given a version of this motion has already been defeated it is desired by the mover that this motion be broken into 10 sections to allow Governors to vote for the entire motion or whatever portion of the sub-motions as each Governor deems fit. These are as follows:)

Motion 2008-01a: Article 1	(Administrative Rules)
Motion 2008-01b: Article 2.1 to 2.26	(Additional Rules for Tournament Play)
Motion 2008-01c: Article 2.27 to 2.29	(Regulations re Clocks and Time Controls)
Motion 2008-01d: Article 3	(Exceptions to the Normal Rules)
Motion 2008-01e: Article 4	(Unsportsmanlike Conduct)
Motion 2008-01f: Article 5	(Appeals)
Motion 2008-01g: Article 6	(Interior Rules)
Motion 2008-01h: Article 7	(Players' Code of Conduct)
Motion 2008-01i: Article 8	(Penalties Imposed by the Arbiter)
Motion 2008-01j: Article 9	(FIDE Standards for Digital Chess Clocks)

***Pierre Dénommée*** The Tournament Rules used to be in Section 3 of the Handbook but they have been removed without authorisation when we have updated to the new FIDE Laws of Chess (fortunately, I still do have a copy of the original text). A 1977 text is no longer adapted to the 2007 rules, especially the digital clocks. There was a rule stating that if Black is absent, white can start Black's clock without making a move. By doing that on most digital clocks, the clock will believe that the player who is actually playing black has the white pieces because his clock has been started first. Consequently, the clock flag may fail to perform properly at move 40. Furthermore, Black is expected to start White's clock when he arrives without playing a move, the clock will have been pressed twice without playing a move, adding 30 seconds to each players and fooling the move counter that the clock is relying upon to determine if the player has played the required number of moves in the allotted time. The only way to keep White move secret that is compatible with digital clocks is to start White clock and for White to seal his move in an envelope, to start Black's clock and to give the envelope to the arbiter

***Lyle Craver***: I seconded these for discussion purposes since these amendments were tabled at the Annual General Meeting thus requiring them to be re-introduced from scratch by the 2007-2008 Assembly of Governors. This is the equivalent of a House of Commons motion not being passed before an election and being re-introduced by the governing party after the election – it starts from scratch with no notice taken of ever previously having been considered by the Governors.

Having said that I think we need to look at each section separately:

Motion 2008-01a: Article 1 (Administrative Rules)  
I recommend Governors vote YES – this is pretty basic

Motion 2008-01b: Article 2.1 to 2.26 (Additional Rules for Tournament Play)  
I recommend Governors vote YES – this text incorporates some suggestions for the administration of a tournament which I already use and can be considered 'best practices' for TDs. Note the paragraph concerning intoxication being grounds for forfeiture. This section specifically points out that the TD is acting on behalf of the CFC which has always been the case but is now formally stated.

Motion 2008-01c: Article 2.27 to 2.29 (Regulations re Clocks and Time Controls)  
I am uncertain on this one – I am very uncomfortable with the wording of this section as it would seem to

indicate a tournament can have different time controls (one incremental one not) in the same event. I very much DO like the exceptions to the rules involving use of clocks as they are straightforward and clear. I would argue that clocks with move counters are in violation of the rules of chess since such clocks provide outside aid to the players which is strictly forbidden under both FIDE and CFC regulations. I will probably vote NO to this section as I dislike having different controls in the same event

Motion 2008-01d: Article 3 (Exceptions to the Normal Rules)

I'm voting YES on this one as it seems like a good balance between what is desirable and what is practical

Motion 2008-01e: Article 4 (Unsportsmanlike Conduct)

I will vote YES to this though am uncomfortable with the last paragraph which seems to allow local rules

Motion 2008-01f: Article 5 (Appeals)

I will vote YES to this as it mirrors current practice and which in my view does not require revision.

Motion 2008-01g: Article 6 (Interior Rules)

This is one area that has ALWAYS been locally controlled and this regulation specifies the rules be "produced" which I consider means available in writing to the players. Vote YES

Motion 2008-01h: Article 7 (Players' Code of Conduct)

Again this mirrors current practice and I'll be voting YES

Motion 2008-01i: Article 8 (Penalties Imposed by the Arbiter)

The only change here is the amount of the maximum fine which given the previous maximum seems acceptable for 2007. I'll be voting YES

Motion 2008-01j: Article 9 (FIDE Standards for Digital Chess Clocks)

I'm uncertain the meaning of paragraph 5 – I own 3 digital clocks but only know where the use manual for the newest is. Does this mean I risk forfeiture if I use one of the older clocks? I'd argue #10 is only important in a down flag situation – once both players make their control this isn't important and is in fact NOT generally true of analog clocks.

In practice I would expect the owner of the clock to know how to set his/her own clock – as an International Arbiter I've worked many kinds of clocks but cannot pretend expertise on all of them. I'll be voting NO on this one as there are several points I think are unduly vague and am uncertain what the intent is.

**Michael Barron:** Governors voted that Game in 60 minutes is Regular control - this change should be reflected in the proposed motion.

In general we should spend less time for creating our own rules and follow international rules whenever possible – for example, if one of players is absent when a game starts.

**Motion 2008-02 CFC Web Site (Patrick McDonald / Chris Mallon)** To approve the development of a new CFC website and automated ratings system as shown in appendix. Exact dates may be negotiated by the new CFC Executive for cash flow purposes. *(This is the re-introduction of motion 2007-12 originally moved by Chris Mallon)*

**Michael Barron:** We don't need full motion discussion cycle in this case – a new website is long overdue. We should amend this motion to grant CFC Executive all necessary power to implement a new CFC website with online tournament results submission as soon as possible.

**Motion 2008-03 (Lyle Craver / Bob Gillanders)** That Handbook paragraph 1206 (b) dealing with the Canadian Olympic team be amended to read:

(b) **National Team:** The National Team shall consist of FIVE players, as follows:

- (i) The Canadian Champion, as of 180 days before the start of the Olympiad.
- (ii) The TWO highest rated players on the Selection Rating list.
- (iii) Two players decided upon by the Selection Committee.

Rationale: this motion is intended to bring the CFC into alignment with FIDE which has mandated 5 player teams for the 2008 Dresden Olympiad (Note: the capitalized words original read 'six' and 'three' respectively)

**Michael Barron:** I second Christopher Mallon's amendment that these changes also affect Paragraph 1206 (c) and (c).ii for the Women's Team – FIDE decided that both Men's and Women's Teams consist of 5 players.

To the contrary of Brian Profit's opinion, I don't think that qualification based on the ratings promotes more tournament play within Canada – our top players play mostly abroad, and in general their ratings don't reflect their actual strength.

**Maurice Smith:** Obviously this paragraph has to be changed. However, I think it should be three from the Rating List and one from the Selection Committee. I seem to recall some time ago when we sent six players, it was the Canadian Champion and five from the rating list. Then the Selection Committee was formed to pick a top Junior who otherwise would not go. I think it was just one at first but it could have been two. Anyway, it became three from the rating list. I believe ratings should have priority over selections because this gives incentive to tournament play. Also there can be no personal bias this way. So my choice would be the Canadian Champion, three from the Rating List and one from the Selection Committee.

**Motion 2008-04 Governors' Letter (Lyle Craver / Bob Gillanders)** That Handbook paragraph 340(b) be deleted. This paragraph reads:

“(b) If the Executive Director submits a Governors Letter to the President for approval and does not receive a revised Governors Letter from the President, or approval, within three weeks, then the Executive Director does have de facto approval, and must send out the Governors Letter. [ref: Motion 89-17; GL, September 1988, p. 1-30 of Appendix B]”

**Lyle Craver:** The reason I am seeking deletion of this paragraph is that it is not in keeping with the current method of producing the Governors' Letter. Specifically: (a) the GL is produced by the CFC Secretary, not the Executive Director and more importantly (b) this paragraph is inconsistent with producing the Governors' Letter on a monthly basis as mandated by motion 2005-11 which is not in the list of consolidated motions in section 3 of the Handbook but was passed in GL#5 of 2004-2005.

**Michael Barron:** I believe this paragraph should state that the CFC Secretary must send out the Governors Letter on a monthly basis as mandated by motion 2005-11 with or without formal approval by the President.

**Maurice Smith:** This paragraph is obsolete so the Motion has to be supported.

## **Motions for Second Discussion:**

**Motion 2008-06 ( Bond, McDonald)** Effective January 1, 2008, that the CFC adopt the following membership fee structure:

Adult membership:	\$49.00
Junior Membership:	\$29.00
Junior Participating	\$20.00
Family Membership	\$25.00



Tournament membership        \$15.00

In all cases, Provincial affiliates shall receive a 10% rebate on fees collected.

This a departure from current practice. It has the advantage of simplifying our membership fees and providing a needed cash influx for the Federation. While some people believe the tournament membership is harmful to full membership levels, it remains popular so a price increase would alleviate any such harm. At the 2007 AGM a membership fee increase was voted down because our service levels were deemed insufficient. My hope is that by the time we have had 2 GLs of discussion on the matter our service levels will have improved.

These tournaments are a drain on our resources. It's bad enough that membership revenue is waived, but to then rate the events for \$.50 per player doubles the pain. The motion proposed will still permit youth players to obtain a CFC rating without the up front membership fee.

**Michael Barron:** This motion probably makes sense, but we don't have any information for consideration. Like in case with respect to the CFC Office we need to see the financial report first, we need to know where the money was spent. I could pay more than \$49 per year for a good cause, but now I don't see a reason for any fee increase. We had this year successful CYCC and Canadian Open – thanks to Gordon Ritchie and his team, successful Canadian Closed, Women's and Amateur Championships – thanks to Hal Bond and his team, Canadian Junior Championship – thanks to GTCL organizers, but as far as I know, CFC didn't spend a penny for all these events. Why it needs my money?

I believe the membership money is better spent on local level – GTCL sponsors GTCL Team Competitions, Grand Prix events, Open, Closed, Women's, Junior and Senior Championships, these events increase CFC membership and benefits our Federation in the end. I would suggest amending this motion to include additional 10% rebate on fees collected for local chess Leagues.

**Ken Craft:** opposed to increase in Adult and Junior fees. Tournament membership should be increased to \$20.

**Lyle Craver:** Has there been any consultation with ANY of the provincial affiliates? As BCCF provincial treasurer I can say with authority I don't know of any with respect to BC. BC currently collects \$ 12 per adult member – this motion would reduce it to \$ 4.90. It is extremely difficult to support any such motion when there's no evidence I can see that provincial interests have been considered at all. As things stand, with the surfeit of "tournament memberships" (which are funds I'm not aware the CFC is sharing with affiliates at all) our revenues are way down and if not for some astute fundraising by a recent BCCF past president (who has taken a lot of heat for his comments about the administration of the national organization) we'd be in deep hot water.

It seems completely facile to say that because "tournament memberships are popular" that the net effect is positive since in BC the net effect is a double whammy with both falling regular memberships and provincial cash flows to suffer catastrophically at least here.

How clearly do we understand what players actually want?

**Maurice Smith:** Tough call here. It reminds me of a lot of things in Toronto. As services go down, taxes go up. I would like to see services improve before supporting this. However, the CFC does need the money, and the amounts are modest compared to other sports organizations. I would like to hear what other Governors have to say.

**Gary Gladstone:** In order to increase membership, while not penalizing the tournament directors rating youth tournaments, why not increase the rating fee for Junior tournaments to \$3.00 for non-members and \$1.00 for members. I am not sure if this is feasible, but it will serve as an incentive for the tournament directors to get youth to sign up as members.

Fee increases are fine as long as the service levels continue to improve.

**Motion 2008-07:** (Bond, Craver) Effective January 1, 2008, “youth only” tournaments which do not require CFC membership shall be subject to the full rating fee of \$3.00 per player.

**Michael Barron:** This motion doesn't make sense at all. I know personally some chess teachers who have switched rating for their “youth only” tournaments from CMA to CFC to support our Federation. For example, only Chess Academy of Canada during the first half of this year submitted to CFC more than 200 tournaments with 5 players per tournament on average. For a full year it's about 400 tournaments or \$1000 in rating fees. If we increase the rating fee, we simply lose this revenue – with CMA charging \$0.40 per player it's very easy to switch back to CMA rating system. Please understand – it's not “\$1000 or \$6000” question, it's “\$1000 or \$0” question

**Ken Craft:** Strongly in favour, although I'm not sure we can pass this motion by January 1, 2008. If not will it be made retroactive to that date.

**Lyle Craver:** Seconded for discussion

**Ellen Nadeau:** I understand looking for new money for the coffers, but this is the wrong place. We go forward with automated rating on line and then have an increase of 500% on the rating fee? I run many youth only tournaments (the sum of this years' youth tournaments will be around 2,000 participants) After tournament costs we are presently left with nothing, we cannot absorb a further \$5,000 expense. Organizers in this area believe these tournaments are building the future of the CFC. Go to automated system(very time consuming for large tournaments) but don't increase the rating fee.

**Maurice Smith:** I support this one. I never favoured a cut rate rating fee. Also I never favoured the fact that membership was not required if the games are being rated.

## **Motions for First Discussion: None**

### **General Comments from Governors:**

**Michael Barron:** I would like to thank new CFC Executives for their efforts in managing our Federation! Unfortunately, we still don't see any real results of their work. I hope we will see some financial reports in GL#3.

The main our problem is still the CFC Office, and recent fiasco with Canadian Junior Champion IM Leonid Gerzhoy's participation in World Junior Championship showed it once again. To avoid similar problems next year, we already have to submit to FIDE requests to change Federation for other recent immigrants who could represent Canada next year - Iulia Lacau-Rodean (ROU), Artem Samsonkin (BLR), Anton Kovalyov (ARG).

Thanks to all people involved for submitting to FIDE tournament reports just in time for October FIDE Rating list, please keep submitting them on time!

I appreciate our President's initiative with respect to the CFC Office - this issue is really worth discussion. I support suggestions of Gary Gladstone and Les Bunning – we need a report from our Vice-President and our Treasurer before we consider proposals for a change, we need to know: what is \*supposed\* to be happening at the CFC office, what is \*actually\* happening at the office, who is doing the work and for how many hours per week, at what salary/hourly rate?

Please confirm that the GTCL bid for the 2008 Canadian Junior Championship is approved, and advertise it on the CFC website and in Chess Canada magazine.

At the 2007 Canadian Junior Chess Championship we had only 12 players, and only 1 of them was from outside of Ontario. The main reason for such poor attendance was very short notice.

We don't want to repeat the same mistakes again and again.

**Gary Gladstone:** It would be greatly appreciated if I didn't hear about CFC news on CHESSTALK first. I think it's great that we're involved in the Karpov Chess Academy and I have no problem with the executive deciding to sponsor with CYCC funds, but it would have been nice if a broadcast e-mail to CFC governors could have been sent out seconds before the chesstalk announcement.

*Appendix 1:*

**CHESS FEDERATION OF CANADA  
2008 Canadian Junior Chess Championship Bid**

<b>Organizing Body</b>	Greater Toronto Chess League
<b>Chief Organizer</b>	Michael Barron President, GTCL
<b>Organizing Committee</b>	The GTCL 2008 Junior Committee
<b>Advertising</b>	3 issues of Chess Canada Echecs (free advertising to be provided by CFC for this event) Internet, Newspapers, Magazines
<b>Publicity</b>	EXTENSIVE PUBLIC RELATIONS –Pre-Event Starting October – Onsite Live Coverage -- Post Event Updates
<b>Internet Site/ Coverage</b>	Will have Daily Internet Updates
<b>City</b>	Toronto
<b>Address</b>	Bayview Games Club 1681 Bayview Avenue Suite 202
<b>Registration</b>	Advance Registration - prior to December 24, 2007; Late registration - additional \$10 up to 6 PM EST on Wednesday, January 2, 2008 subject to availability.  The GTCL reserves the right to limit participants to 60 players, and to guarantee space for last years Canadian Junior Champion, last years Runner-up and for each province (and the Territories) up to 3 representatives including their provincial Junior Champion, and up to 6 additional players at the discretion of the GTCL.
<b>Dates</b>	January 2-6, 2008
<b>Format</b>	5 Round Swiss
<b>Time Control</b>	90 minutes for 40 moves and 15 minutes for the rest of the game with 30 seconds increment from the first move.

<b>Rounds</b>	5 rounds, 1 game per day starting at 6:30 PM, Wednesday, January 2 to Saturday, January 5; last round at 2:00 PM Sunday, January 6, 2008
<b>Playoffs</b>	Sunday, January 6, if required
<b>Rated By</b>	CFC and FIDE
<b>Equipment Provided</b>	All equipment including clocks provided by the Bayview Games Club (if necessary, additional clocks could be borrowed from OCA).
<b>Prizes</b>	<b>Winner will be Canada's representative at the World Junior (paid for). Top Girl will be Canada's representative at the World Girls (partially paid for – depends on the number of participating girls).</b>
<b>Entry Fees</b>	<b>\$150 (cash or cheques received by December 24, 2007)</b> <b>Late Fee: on day of tournament \$10 extra.</b> <b>\$100 from each entry will be transferred to CFC for World Junior expenses.</b>
<b>TD</b>	Vlad Dobrich
<b>Side Events</b>	none

<b>Budget</b>	Revenues - Entry fees (20x\$150) \$3,000 Total Revenues \$3,000 Expenses - Prizes (20x\$100) \$2,000 - Advertising \$ 200 - TD Fees \$ 500 - Meeting Space \$ 200 - Misc \$ 100 Total Expenses \$3,000  CFC to pay for CFC and FIDE ratings, and to provide free advertising in Chess Canada Echecs
<b>Date Submitted:</b>	June 10, 2007
<b>Submitted by:</b>	Michael Barron
<b>Accepted by:</b>	

*Appendix 2*

**CANADIAN YOUTH CHESS CHAMPIONSHIPS  
CHAMPIONNATS JEUNESSE DU CANADA**

**JULY 14-15-16-17 2008  
14-15-16-17 JUILLET 2008**

**QUEBEC CITY  
QUÉBEC**



An activity of the Quebec 400th anniversary festivities

Dans le cadre du 400<sup>e</sup> anniversaire de la ville de Québec  
Québec 1608-2008

## PRESENTATION

---

The **Fédération québécoise des échecs** is interested in hosting the Canadian Youth Chess Championships 2008 in Québec city. This prestigious event would coincide with the celebrations for the 400th anniversary of the city of Québec (1608-2008). The province of Québec last hosted the CYCC in 2001 and we feel that it would be time for a return, this time with the support of L'Association des échecs du Nord-Est ontarien. Mrs. Ellen Nadeau and Mr. Denis Nadeau would participate fully in the organizing committee - there is no doubt that their experience with past CYCCs would be most beneficial to the committee. Furthermore, since Mrs Nadeau is governor of the Chess Federation of Canada, we would insure that the CFC is present in the organization committee.

The city of Québec, the oldest of Canada, is the birth place of French civilization in North America and is one of the major cities of Canada; its population of 717 600 ranks it 10th. But its importance goes beyond numbers; it is the most european city in North Amercia. The historical dimensions of the Old City have been preserved - doors in the old walls are the only way in, allowing the visitor to step directly into another century.

The Canadian Youth Chess Championships would be taking the opportunity of making a first visit, on the 400th anniversary. Advantages of locating the CYCC 2008 in the province of Québec's capital are numerous: - Québec is an important location easily accessed by road, air, train and with an excellent communication infrastructure. The numerous touristic attractions will be further enhanced by the celebrations of the 400th. The considered location (Hôtel Universel Ste.Foy) of the tournament is a 4 star luxury hotel, strategically located close to the major arteries and the Pierre-Laporte bridge, the natural road from Montréal. The hôtel is located 15 minutes to Downtown and yet, the cost is accessible, considering the 400th anniversary festivities. For limited budgets there are other accomodations close by such as the Laval University (the oldest in North America) residences just 10 minutes walk away

The Fédération québécoise des échecs sees the CYCC 2008 as an opportunity to build a bridge of collaboration with the Chess Federation of Canada with a view on building better communication and create further collaborative projects. The participation of L'Association des échecs du Nord-Est ontarien, affiliated with the CFC, will contribute valuable experience since they have organized 2 CYCCs, helped arbiter 2 more, they are familiar with the management procedures of the CFC.

## BUDGET

---

We are contemplating various revenue sources: registration fees, sponsorships, gifts, grants, financial contribution from the Fédération québécoise des échecs. The following budget is based on the participation of 150 players, *paying 225\$ with a discount for early registration. 1/3 will go to the organizer.* Considering the participation of 180 in Ottawa 2007, we feel that this projection is realistic. The schematic budget will be presented first, details following in note form.

### Revenus

Registrations fees

7 500

1



Financial contribution of the FQE	1 300	2
Gifts	1 000	3
Canteen	500	4
<b>Total</b>	<b>10 300</b>	
<b>Expenses</b>		
Rental fees (hall + ...)	2 000	5
Professionnal services	1 600	6
Publicity	1 500	7
Equipment rental (computers...)	800	8
Official Souvenirs	750	9
Mailings	350	10
Transportation fees	600	11
Rating fees	225	12
Tournament necessities	500	13
Public and media relations	500	14
Accomodation (guests)	125	15
Press release	350	16
Canteen	300	17
Meals (for volunteers)	200	18
Communications and others	200	19
Trophies and 24 medals	300	20
<b>Total</b>	<b>10 300</b>	

Any sponsors that we could find would be used for supplementary activities to raise the profile of the event. There are numerous possibilities:

- Simul
  - Lecture
  - famous player on hand
  - MonRoi
  - Giant chess sets
  - Assistance for transportation of needy players.
- Everything is contingent on the desires and requests of sponsors.

## COMMENTARY ON THE BUDGET

---

### Revenues

1 The revenues from registration fees are based on the paying participation of 150 players, assuming the lowest revenue if everyone preregisters. The organizer keeps 1/3 for the general expenses of the tournament. The players will register to the Chess Federation of Canada which will pay the organizer's part. Any surplus will be used for extra activities for players (formation, lessons, extra souvenirs...)

2 The financial contribution of the FQE is 1 000\$. This amount was decided by the executive committee on September 15 2007.

3 In the past, individuals have given similar sums in special events; for instance, when the FQE organized the Youth Chess Championship, there were private contributions of this level.

4 During the tournament, the organizer will host a canteen where participants can obtain cookies, coffee, donuts, juice and other similar products, all at reasonable cost.

### Expenses

5 The rental of rooms for the duration of the tournament is 500\$/day x 4 days for a total of 2000\$. A description of the hall and rooms will follow.

6 This item covers the arbiters, TD, assistants... responsible for the administration of the tournament:

three arbiters and two assistants assigned to communications: Internet, welcome. Apart from this, someone will be mandated to produce a logo for the event.

7 We project 3 phases for the external publicity; first, a bilingual information sheet will advertise all the components of the CYCC. 100 posters will be printed for the circumstance

8 Multi media player, 2 computers, one printer, a DGT auto sensitive chess board will be part of the computer material rented for this tournament.

9 We have not yet decided the type of souvenir given to each participants, but we budget 5\$ per player to insure that everyone leaves with a memento of the event.

10 We plan on doing 2, maybe 3 mailings to incite the most canadian players (especially quebequers to encourage them to participate) possible to attend the event. There should be 600 letters @ 0,58\$ each.

11 This item is for the transportation of the organizers, mostly between Montréal and Québec.

12 This is for the FQE rating of all players of this tournament: 1,50\$/player.

13 This is the standard tournament necessities: notation sheets, chess boards, paper for the printer, carboard for results... We hope to borrow the sets and clocks from the CFC otherwise the cost would be higher.

14 We will hire a media specialist for relations with the press, radio, television We have done so with the Championnat ouvert du Québec and results were outstanding.

15 This item is for the accomodation of a representative of the CFC to attend the opening ceremonies.

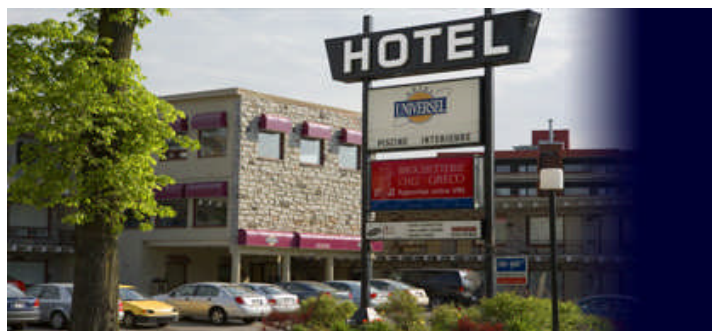
16 Press releases will be distributed to the national press. The cost per press release is 250\$.

17 As much as possible, we wish to organize a canteen on site, manned by a volunteer.

18 The volunteer workers at the CYCC should not have to pay for their meals.

19 This is for long distance phone calls and all other unexpected expenses.

20 12 Trophies and 24 medals.



**Hotel and tournament site**

## RESPONSABILITIES

---

The risks and responsibility of this event will be carried by the Fédération québécoise de échecs with the understanding that the Chess Federation of Canada will guarantee the prize for the winners, which is the cost of transportation for the winner of each section. The FQE will take care of the CFC membership for Quebec players. The main contact is **Richard Bérubé 514-252-3034**.

L'Association des échecs du Nord-est Ontario (L'AENO) will be participating as a consultant since its members have ample experience with the CYCC, as organizers and arbiters of youth events. They should also simplify communications between the Chess federations: Canada and Québec. The designated contact is **Ellen Nadeau 705-335-5322**.

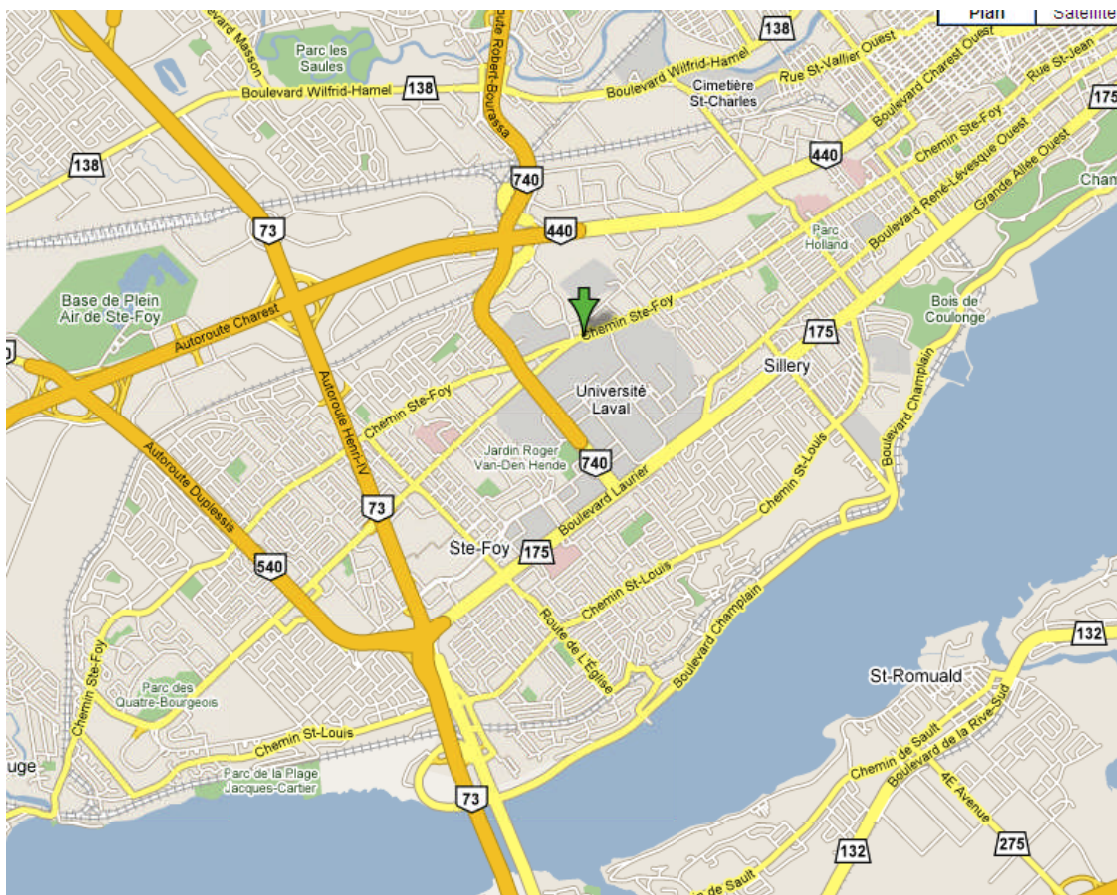
## TOURNAMENT SITE

---

The tournament will be held on Chemin Ste-Foy which connects with Highway 73 that leads directly to the Pierre-Laporte Bridge, the main entrance to Quebec city. From the bridge to the tournament site, it takes up to 10 minutes. Université Laval is slightly to the south.

The tournament site is on a busy bus line because of the strategic location of Laval University. The Ste-Foy intercity bus station is approximately 6 minutes walk away.

Rooms are 129\$ + taxes. There are 2 medium sized halls that can each hold 100 tournament players. Another room will be used for the organization of the tournament.





**Room**



**Restaurant**



**Swimming Pool**



**Analysis Room**

**Internet site of the Hotel**  
<http://www.hoteluniversel.qc.ca/>

Organizing Body	Fédération québécoise des échecs, (FQE)	
-----------------	---	--

	4545 Pierre-de-Coubertin, Montréal <a href="mailto:dirgen@fqechecs.qc.ca">dirgen@fqechecs.qc.ca</a> Phone : 514-252-3034 Fax : 514-251-8038
Chief Organizer	Richard Bérubé for FQE (info : as above)
Organizing Committee	Richard Bérubé : President (Coordination) Ellen Nadeau : Vice-president (Communication) Charles Tremblay : Administrator (Location responsible) Denis Nadeau : Administrator (Consultant) François Caire : Administrator (Reception) Mario Alain : Administrator (Publicity) Richard Cloutier : Administrator (Treasurer)
Advertising (Chess circle)	Internet site : <a href="http://fqechecs.qc.ca/cycc.htm">fqechecs.qc.ca/cycc.htm</a> Magazine Échec+ : 1 page 3 times Magazine Chess Canada : 1 page 3 times Poster : 50 copies to chess clubs in Canada
Publicity (Outside chess circle)	Poster : 50 copies to strategical location Communique : Canadian wire services (2 times)
Internet/Coverage	MonRoi : Games transmission live Official site : <a href="http://fqechecs.qc.ca/cycc.htm">fqechecs.qc.ca/cycc.htm</a>
City	Quebec city
Address	Hotel Universel, 2300 Chemin Ste-Foy, Québec
Location Description	<b>Hotel Universel :</b> Situation : Next to the wooded Université Laval campus and major shopping centres, as well as only 10 minutes from charming Old Quebec, the hotel offers comfort, hospitality and a central location at very competitive rates. Restaurants : Near by less than 100 ft, different type Shops : Near by less than 500 ft, Stores Swimming pool : Indoor Transportation : - Airport shuttle (free) - Outdoor bus parking (free) - Outdoor car parking (free) Parks : University Laval Campus
Tournament Rooms	Main playing room : 2 rooms joined together, possibility of 200 players 6734 sq ft Air conditionning, Carpet flooring, Good lighting, 10 ft height, Well control noise factor, Washrooms seperated from playing room. Last main renovation : 2005
- Analysis Room - Waiting Room	- 1248 sq ft. Well situated. Good lighting, Carpet flooring - About the same size. Can accomodate 100 parents.
Registration	Pre-registration to the CFC. Dead lines : July 3, 2008. Extra after June 15.
Dates	July 14-15-16-17, 2008
Format	Semi-open by age category. Swiss system. Possibility of round robin in certain section according to CFC rules.
Time Controls	According to CFC rules.
Rounds	7 rounds. 10am and 3pm
Playoffs	July 17, after round 7
Rated by	CFC - FQE
Equipment provided	FQE : 30 chess sets; CMA, CFC and OCA will be ask to contribute.

Prize fund	According to CFC rules
Entry Fees	150\$ (50\$ to the organizer)
Tournament Director (Arbiter)	Chief : Ellen Nadeau; Assistants : Stéphane Beaudoin,
Side Events	Blitz tournament on July 17 after closing ceremony Free and open to all.
Accommodation	Room Rates : 129\$/day (up to 4 persons). Rooms with two double beds. Air conditioning, complete bathroom, shower, carpet, refrigerator, television, blow dryer, wake-up call, nice view.
Budget	See details higher
Date submitted	2007 - 10 - 09
Submitted by	Richard Bérubé :

## ORGANIZING COMMITTEE

**The Organizing committee** is composed of the 7 organizers with extensive experience in organizing chess events.

**Richard Bérubé:** Business manager of the FQE, organizer of Canadian Open, Quebec Open tournaments, FIDE master, and known trainer.

**Mario Alain:** Vice president of FQE, from Trois-Rivières

**Ellen Nadeau:** Governor for the CFC, organizer of CYCC, Canadian Open, arbiter

**Denis Nadeau:** President of AÉNO; organizer of CYCC, Canadian Open...

**Charles Tremblay:** President of Ligue d'échecs de Québec City

**Richard Cloutier :** Treasurer of the FQE.

## FURTHER INFORMATION ABOUT THE FQE

The Fédération québécoise des échecs (FQE) is a non-profit organization dedicated to the development of chess in Québec. Since its foundation in 1967 it has provided a rating system for Québec, a chess magazine (6 times a year), rules and regulations books, organization of national events and other training opportunities and services.

The board of governors of the FQE has 23 governors, 5 elected directors and a representative of every affiliated league. The electors are delegates of every affiliated league, existing administrator, all with equal voting right. The FQE has an office at the Olympic Stadium in Montréal at 4545, Pierre-de-Coubertin, as a member of the Leisure Committee of Québec, mandated by the Government of Québec to facilitate the existence of its affiliates: products and services. Since 1984, the FQE has been accredited as an official component of Leisure-Québec allowing the FQE to benefit from permanent government funding. The FQE is the official spokesperson of the government of Québec in the chess community.

**Fédération québécoise des échecs**

Telephone: 514-252-3034

Fax: 514-251-8038

Email: [dirgen@fqechecs.qc.ca](mailto:dirgen@fqechecs.qc.ca)

*Appendix 3*

**BID  
CANDIDATURE**



**CANADIAN OPEN CHESS CHAMPIONSHIP  
CHAMPIONNAT OUVERT D'ÉCHECS DU CANADA**  
**Presented to : The Chess Federation of Canada**  
**Présentée à : La Fédération canadienne des échecs**

**MONTRÉAL 2008**



**❖ Presentation**

The Quebec chess federation (Fédération québécoise des échecs) is proud to present a bid for the Canadian open chess tournament to be held in Montreal from July 19 to 27, 2008. The tournament will have 9 rounds in five sections with one game per day. We think that a single section tournament is not suited for Quebec players.



Montreal is well situated to attract players all around. Toronto, New York, Ottawa and Quebec city are major cities situated less than 6 hours drive from Montreal. The last time the Canadian open was held in Montreal, more than 340 players participated. So the bid we are presenting is based on a participation of 250 players which is fairly reasonable and realistic. The Quebec open will take a rest of one year.

We plan to put the tournament in a well situated environnement near down town Montreal. The Cegep du Vieux-Montréal is near a major metro station and well desserved by bus system. Many hotels are situated nearby including high standard and low budget hotels.

The success of a tournament depends largely on the dynamism of the organizing committee. The committee for the event will include experience people. The fact that they come all from Montreal will facilitate the communications. It might be a good idea to add a person coming from the CFC. This person could participate to 2 or 3 meetings to keep the CFC inform about the progression of the tournament organization.

The tournament will be CFC, FIDE and FQE rated. Considering the FQE is already sponsoring the event for 6 000\$ (see the budget), we are asking the CFC that the Quebec players pay half the due for CFC membership tournament if they are not full CFC members. The players outside Quebec and non FQE members do not have to pay FQE membership. This measure will help the participation. Another measure who could help the participation is the possibility that the CYCC be held in Quebec city according to the bid presented recently.

The FQE could count on the financial participation of the Just for laughs festival for about 5 000\$. Side activities will also be organized by the Just for laughs festival during the event. These side events will include giant chess and simul.

A place in the tournament hall will be reserved for the CFC for book saling. Usually this is canteen where players can get sandwiches, juices, cakes and other foods.

The FQE will use largely his magazine Echec+ to advertize the event. The tournament will also be advertized in other magazines.

This is a minimal bid who can be improved by the participation of more sponsors. Per exemple, Mr André Langlois, organizer of the Montreal international chess tournament, has manifested his interest.

The FQE will be delighted to work with the CFC to make a success of this tournament. There is no doubt that the chess community will respond favorably.

## ❖ **Tournament site**



255, rue Ontario Est  
Montréal (Québec) H2X 1X6 CANADA  
Téléphone : 514 982-3437

Photo #2



The tournament will be held entirely on the second floor. There is enough place for a tournament of 360 players. The Parking is large and is situated underneath.

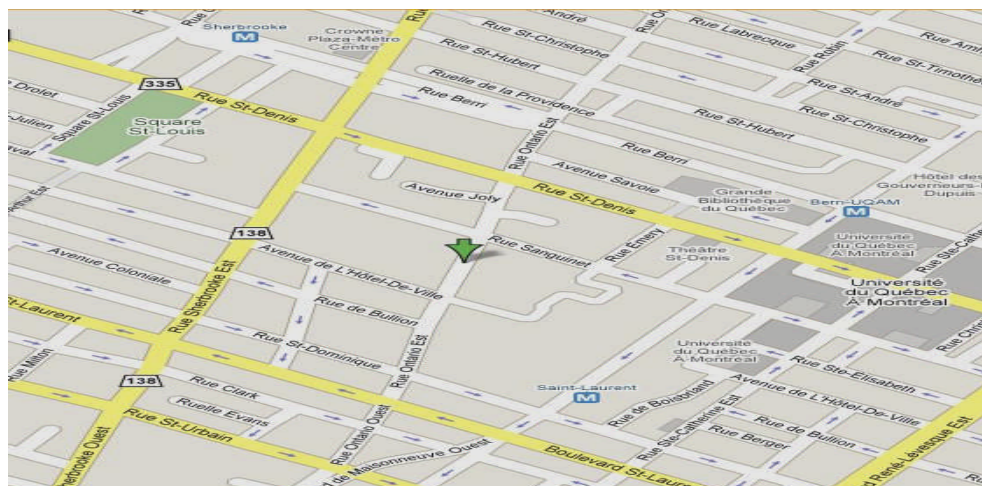
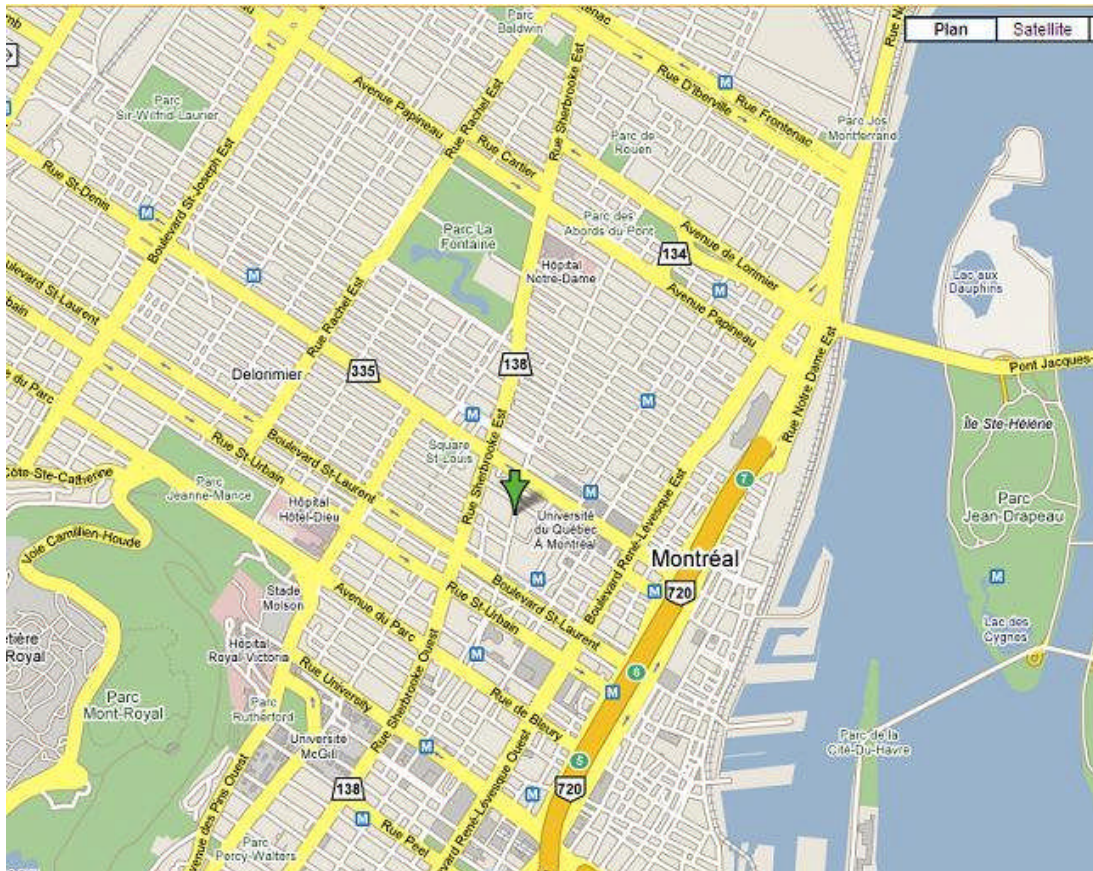
Photo #3



Photo : KaKrouna You

The main entrance is spacious and well lighted.

## ❖ Location in Montreal



❖ **Tournament room**



Photo #4



Photo : Daniele Ducharme

The tournament room, which is the cafeteria, can easily contain 360 players comfortably.

Photo #5



Photo : Caroline Faucher

Mechanical stairs are available.



Photo : Zoé Tousignant

## ❖ Analysis room

Photo #6



Cafe l'Exode will served as the main analysis room, but also as a snack bar for the players and spectator.

Certain side events can be held in this room. In the past, the Cafe was used for blitz tournament.

In all those rooms, lighting and conditioned air are good.

## ❖ Budget

The budget is based on 250 entries.

## Revenues

Entry fees	20 500	1
FQE participation	6 000	
Just for laughs sponsorship	5 000	
Ait international sponsorship	2 000	
Canteen	800	
Others	200	
<b>Total</b>	<b>34 500</b>	

## Expenses

Prize fund	15 000	6
Grands masters fees	4 000	2
Lodging GMs	6 000	3
Room rent	5 000	
Publicity	1 500	4
Arbiters and helpers	1 000	
Equipment	250	
Transportation	750	
Canteen	400	
Rating	600	5
<b>Total</b>	<b>34 500</b>	

Notes :

- 1 250 entries x 82\$ (average) = 20 500\$
- 2 8 Grand masters x 500\$ = 4 000\$
- 3 8 Grand masters x 750\$ (75\$/night x 10 days) = 6 000\$
- 4 Posters and special mailing
- 5 Fide rating
- 6 The prize fund might be improved with the participation of more sponsors.

## ❖ Schedule

Saturday July 19 - Opening ceremony :	1:30 pm
Saturday July 19 - Round 1 :	2:00 pm
Sunday July 20 - Round 2 :	2:00 pm
Monday July 21 - Round 3 :	6:00 pm
Tuesday July 22 - Round 4 :	6:00 pm
Wednesday July 23 - Round 5	6:00 pm
Thursday July 24 - Round 6	6:00 pm
Friday July 25 - Round 7	6:00 pm

Saturday July 26 - Round 8	2:00 pm
Sunday July 27 - Round 9	2:00 pm
Sunday July 27 - Closing ceremony	8:00 pm

The tournament will have one game per day. The schedule (time of rounds) may change a bit following discussion with the organizing committee.

## ❖ Time control

We will apply the time control suggested by FIDE : 30 moves in 90 minutes + 30 minutes/Ko with incrementation of 30sec from the beginning. The duration of the game is approximately 5 hours base on a game of 50 moves.

## ❖ Smoking

Smoking is prohibited in the building according to a provincial law. Smokers can still go just outside the building to smoke.

## ❖ Security

Security in the building is assured by Garda. People from Garda are trained to give first aid in case of emergency. The nearest hospital is 200 metres from the tournament site.

## ❖ Arbiters

Three certificated arbiters will be in charge. Two persons will be added to help collecting results and prepare the tables.

## ❖ Hotels

A special arrangement will be taken with nearby residences. Here is a list of hotels situated at walking distances from the tournament site.

**The Maison du Prêt d'honneur** is situated at walking distance from the tournament site (around 9 minutes). Those student residences are associated with the Cegep du Vieux-Montréal and are brand new.



**Facilities** : Spacious room, air conditioned, internet, telephone, nice view. There are different kind of studios and rooms.

**Cost** : 65\$/night during holiday season, single or double. Apartment with 2 rooms are at 130\$/night.

People has to reserve soon. Special groups tariffs are also possible.

**Parking** : Free with the room situated nearby.

**Metro** : a metro station is situated at 3 minutes walking distance (St-Laurent station).

**Address** : 1, boulevard René-Lévesque est at the corner of St-Laurent.

**Internet** : <http://www.mph.qc.ca/>



**The Gouverneur Place Dupuis** is located in downtown Montreal in the heart of the Latin Quarter. With direct access to the Montreal metro system and walking distance to charming Old Montreal, you are minutes away from the main attractions, restaurants, shops and theatres. 129\$/night. 4 minutes walking distance from the tournament site.

Address: 1415, rue Saint-Hubert, Montréal (Québec) Canada H2L 3Y9

## ❖ Hotels 3 stars nearby

### [Auberge Bonsecours](#)

353 Saint-Paul Street East  
Montreal, Qc  
514. 396.2662 fax: 514.396.5138

### [Days Hôtel & Centre De Conférence Montréal](#)

1005 Guy  
Montreal, Qc, H3H 2K4  
1.877.468.3550

### [Hotel le Saint-André](#)

1285 St-André  
Montreal, Qc, H2L 3T1  
514.849.7070 fax: 514.849.8167



1.800.265.7071

[Quality Hotel Downtown](#)

3440 avenue du Parc  
Montreal, Qc, H2X 2H5  
514.849.1413  
fax.514.849.6564

[Quality Hotel Midtown](#)

6445 Decarie  
Montreal, Qc, H3W 3E1  
514.739.3800  
fax.514.739.5616

## ❖ Hotels 2 stars nearby

[Le Sunset Suites](#)

2445 Sunset Street  
Montreal, Qc, H3R 2X9  
514.738.6504

[Travelodge Montreal Centre](#)

50 Rene-Levesques W.  
Montreal, Qc, H2Z 1A2  
514.874.9090 fax: 514.874.0907  
1.800.363.6537

## ❖ Sponsors

**Fédération québécoise des échecs 6 000 \$**

The financial participation of the FQE will permit to attract at least 8 grand masters, lodging and appearance fee

**Ait international 2 000 \$**

Ait international is an Engineering consultants company of Montreal. Their participation will served to pay for publicity and equipment.

**Just for Laughs 5 000 \$**

Just for Laughs is well known. The FQE is associated with JFL since 2001. Their sponsorship will served to pay for the tournament rooms.

## ❖ Preliminary Organizing committee

Richard Bérubé : Fédération québécoise des échecs  
Sylvain Millette : Club d'échecs de Montréal  
Daniel Rousseau : Fédération québécoise des échecs

To Mr Hal Bond :

We are available to answer any question. You can reach us at the phone number  
(514) 252-3034

Other information :

Email : [dirgen@fqechecs.qc.ca](mailto:dirgen@fqechecs.qc.ca)

Fax : 514-251-8038

Internet : [www.fqechecs.qc.ca](http://www.fqechecs.qc.ca)

Best regards,

Richard Bérubé  
Director general  
Fédération québécoise des échecs

#### *Appendix 4: Motion 2008-01*

## CFC Tournament rules

### *Administrative rules*

The organisation sponsoring the tournament may appoint a local committee to take charge of the arrangements and has the following powers and duties: to appoint the tournament Chief Arbiter unless assignation is mandatory; to make advance arrangements for the tournament, including playing quarters and any equipment to be supplied; to establish the date and time of each session; to establish the conditions of entry; and to be generally responsible for the observance of all CFC procedures and policies.

For the inclusive dates of his play, each player in the tournament must be a CFC member in good standing.

Play shall be governed by the Laws, by the FIDE interpretations of the Laws, by the CFC Tournament Rules and Pairing Rules, and by all CFC procedures and policies.

### *Additional rules for tournament play*

All games must be played in the tournament rooms on the day and at the times specified by the tournament organisers, unless the Chief arbiter makes or accepts other arrangements (e.g., a first-round game may be arranged to be played in advance of the start of a tournament).

If a player wishes to adjust pieces on their squares when his opponent is absent and an arbiter is not available, he may ask a spectator or a player who is not on the move to witness the adjustment. It is only the player whose turn it is to move who may adjust pieces on their squares. If the other player adjusts his own or his opponent's pieces, he may be penalised at the discretion of the arbiter.

The Chief arbiter should stipulate at the beginning of the tournament the direction the clocks are to face, and the players should seat themselves so that the clocks are to the right of the players with the black pieces. For team tournaments, the Chief arbiter is free to place the clocks and the players as he see fit. Mechanical clocks should be set so that each unit will register six o'clock when the first time control expires, one minute being added to the time control when the clocks are set to compensate of any possible minor defects in the accuracy of the clocks of their flags. The players (and when possible, the arbiter) should inspect the clock and its flags for evident defects before and during play.

When the round begins, the clock of each player with the white pieces is started by his opponent, if the latter is present or by an official if both players are absent.

When a clock is not available at the beginning of the round, but is brought or obtained later, the following rules apply:

- (a) If both players are present when the round begins, they start play immediately. If a clock becomes available later, the elapsed time of the round is divided equally between the two players.
- (b) If one player is absent when the round begins, he is charged with the elapsed time of the round up to the moment of his arrival. The time from his arrival until a clock becomes available is divided equally between the two players.

- (c) If both players are absent when the round begins, the player with the white men is charged with the elapsed time of the round up to the moment of his arrival. If his opponent arrives still later, he is charged with the difference between White's arrival time and his own. White makes his first move as soon as he arrives, and the time from then until a clock becomes available is divided equally between the two players.

With the exception of any games postponed by consent of the Chief arbiter, all the games of each round must start promptly at the time specified (CFC Tournament Rule Art. 2.1). If feasible, the arbiter should give five minutes warning, then announce that play must begin.

Any player who does not notify an arbiter in advance that he will be unable to play in any round and then defaults the game by not appearing within one hour after the starting time, unless the rules of the competition specify or the arbiter decides otherwise (FIDE Article 6.6) may be fined the sum of 50,00\$ payable to the sponsoring organisation. The player should not be permitted to continue play in the tournament and may be barred by the sponsoring organisation from any of its tournaments until the fine is paid.

In any game without a clock at the beginning of the round, a player loses by default if he does not arrive within one hour after the time specified for the start of play (unless the rules of the competition specify or the arbiter decides otherwise). If neither player arrives within one hour the game is lost by both (FIDE Laws of Chess Article 6.6)

In a rated tournament, any participant who quits the tournament or who is absent for a round of the tournament without previously informing the arbiter is to be considered as having actually played and lost the game, the silence before the default is to be interpreted as giving consent to losing the appropriate number of rating points. The only exception to this rule is where two players who default in a particular round are paired against each other.

The name of every defaulting player will be removed from the pairing list for subsequent rounds. However, a player can, on request, be reinstated on the list after a single default so long as the request is made before the pairing of the round following the default have been made public

When a player's flag falls and it is not clear that he has made the prescribed number of moves, an arbiter, if not already present, is summoned; the arbiter stops both clocks, determines whether the prescribed number of moves has been made, and makes the appropriate ruling.

In the absence of an evident defect, the falling of a clock's flag and the time on the clock indicates the moment at which the player's time control period expires. As the players (and, when possible, the arbiter) should have inspected the clock and its flag for evident defects before and during play, and as one minute has been added (this addition is permitted for mechanical clocks only) to the time control to compensate for any possible minor defects in the accuracy of the clocks, a claim that a flag has fallen prematurely should be accepted only if there is a clear space between the minute hand and the left side of the hour marker when the flag falls.

If the end of a time control period will not be marked by a flag fall because of absence of a flag or a defective flag, the time control period is deemed to have expired when there is a clear space between the clockwise side of the appropriate dial marker and the minute hand.

For mechanical clocks only: when any secondary time-control period is less than one hour, both clocks should be reset by moving them forward one hour, less the secondary time control. If the players are allowed to reset the clock themselves at the end of each time control period or when both players have made the specified number of moves in each time control period, the Chief arbiter must specify the exact procedure to be used in a written and also, whenever possible, oral announcement in advance of the first round.

If the arbiter rules that no time is available to complete a game which must be reinstated or replayed under Article 7 of the FIDE Laws of Chess, he may take whatever action he deems appropriate.

Each player is required to record the moves of the game in a manner specified in Article 8.1 on the scoresheet provided or approved by the tournament organiser.

Except as provided the Laws of Chess no person may act as the deputy of the player in recording moves.

In general, the tournament arbiter may use his discretionary powers to accommodate the rules to the special needs of a handicapped player. However, he must inform each opponent of the handicapped player, before the start of the game, of any such accommodations of the rules he has granted and must ensure that such accommodations do not confer any undue advantage on the handicapped player with respect to his opponent, who must be granted similar accommodations if he requests them.

When a game is completed, the result must immediately be registered officially with the arbiter or his designee. The manner in which the official registration is accomplished (by signed scoresheets, entering the result on a pairing sheet, etc.) is at the arbiter's discretion.

Obvious intoxication from abuse of alcohol or drugs shall be considered to be a diminution of a good playing environment and shall be sufficient reason to declare the game forfeited or to eject the offending player from the event, or both.

During playing sessions players with games in progress should not leave the playing room for extended periods without first informing the arbiter.

The Chief arbiter is a representative of the CFC on the tournament site. He is responsible for the technical management of the tournament and is bound by the Laws of Chess, by the official interpretations of the Laws, by the CFC Tournament Rules and Pairing Rules, and by all CFC procedures and policies.

The Chief arbiter's duties and powers normally include the following: to appoint assistants of various types as required to perform his duties, to accept and list entries, to establish suitable conditions of play and to announce them to the participants, to collect scores and tabulate results, and to report results to the sponsoring organisation and the CFC for the official record.

The Chief arbiter may delegate any of his duties to assistants, but he is not thereby relieved of responsibility for their correct performance. An arbiter, as he must have absolute objectivity, and must be able to devote his full attention to his duties as arbiter, should not, in principle, be a player in any tournament he directs. At the lowest level of tournament, the arbiter may be a player if necessary, but an arbiter who is not a player in the tournament is recommended wherever possible. The chief arbiter is strictly prohibited from being a player in any tournament above the lowest level.

Any pairing software used in a tournament is just an aid to pairing: the Chief Arbiter is always responsible for all pairings including those made by a computer or by any Deputy Arbiter which is part of his team.

The standards of chess equipment of FIDE tournaments are applicable also to CFC tournaments. Unless the organisers have provided standard equipment or designated preferred equipment for all players, Black has his choice of any equipment conforming to these standards. If Black is absent when the round begins and White arrives first, White has the choice. The opponent may not challenge the choice as not conforming unless he can provide or obtain equipment which does conform, or conforms more nearly to these standards. *If neither player has standard equipment, the game shall be played using the one that is closest to the standard. A game not played because neither player has any equipment shall be scored as zero for both players and shall not be rated. In a Swiss*

*tournament, the colour assigned for this game does not count and the players are not considered to have been paired together. Questionable cases are left to the discretion of the arbiter whose decision shall be final. In team competitions, forfeits by lack of equipment must occur on the highest numbered boards; for example, if in a team competition on six boards, only four complete equipment are available, the forfeits must be on board number 5 and 6. Furthermore, in Leagues in which there is a visiting team and a local team, the local team is responsible for providing all the equipment. The local team shall lose by forfeit all matches cancelled for lack of equipment.*

#### CFC Standards of Equipment for Chess Clock

The following rule states some exception from the general rules that Black has the choice of equipment.

1. Any Chess clock officially endorsed by FIDE is also recognised by the CFC. The game should be played with a FIDE endorsed clock if one is available.
2. A digital clock that can be used to play a game without being reprogrammed during the game has priority.
3. A digital clock that forbids the double fall of the flag when it is used without incrementation is not standard but tolerated in tournament. In order to avoid playing with such a clock, the player having the White piece can use any clock, even a mechanical one. In case of a claim of draw for double flag down, the arbiter shall use his best judgement to decide if the two flags would have been down if the clock had continued to run and doubtful cases shall be ruled as drawn. Player using non standard clock should be aware of the risk they are taking.
4. A digital clock incapable of displaying which flag fell first is not standard but tolerated in competition. The player having the white pieces can refuse to play with such a clock if he can supply a digital clock having this capability.
5. A digital chess clock not equipped of a low battery indicator is not standard but tolerated in competition. In order to avoid playing with such a clock, the player having the White piece can use any clock, even a mechanical one.
6. Buzzer, if any, must be deactivated at all time. If the buzzer cannot be turned off, the clock cannot be used in competition (try to imagine 130 clocks ringing at move 40). The arbiter shall use his best judgement to deal with the problem of a ringing clock. Nevertheless, the opponent shall receive at least 2 minutes extra thinking time for the disturbance which means that he will not lose the game on time because of the buzzer.

#### Rules for playing with digital clocks

1. The player using a digital clock must know how to operate it. The arbiter can forfeit a player who tries to evade a time penalty by refusing to disclose his clock mode of operation.
2. If the low battery indicator is on, a game shall not begin with this clock but the game shall continue if the indicator becomes active after the game has begun.
3. Digital clocks supplied by the organiser are programmed by an arbiter, other clocks are programmed by the players unless the arbiter decides otherwise.
4. A player is responsible for all problems caused by his failure to properly program his clock.

#### Equivalence of time control

*For all CFC rated tournament the following time controls are considered equivalent.* The intent of the rule is to standardise tournaments in which some players have digital clocks whereas others have mechanical and to enable players with mechanical clocks to register in tournaments with incremental time control.

Eventually, only digital clocks will be used in all tournaments but a transition period is required. Any tournament may choose to use another equivalence if it is announced in advance in all tournament publicity. It is also perfectly acceptable to organise a tournament requiring digital clocks on all boards.

<b><i>Traditional time control</i></b>	<b><i>equivalent time control</i></b>
40 moves/2h followed by 20 moves/1h followed by 1 hour SD	40 moves/ 100 minutes 20 moves/50 minutes 40 minutes +30 seconds per move
40 moves/2h followed by 20 moves/1h followed by 30 minutes SD	40 moves/ 100 minutes 20 moves/50 minutes 10 minutes +30 seconds per move
40 moves/2h followed de 1 hour SD	40 moves/100 minutes 40 minutes +30 seconds per move
30 moves/1h30 followed by 1 hour SD	30 moves/1h15 minutes 40 minutes +30 seconds per move
61 minutes SD (standard game)	51 minutes SD+10 seconds per move
60 minutes SD (rapidplay)	50 minutes SD+10 seconds per move
30 minutes SD (rapidplay)	20 minutes SD+10 seconds per move
25 minutes SD (rapidplay)	15 minutes SD+10 seconds per move

If the traditional time control is not in this table proceed as follow

- 1) For any non sudden death time control, subtract the whole extra time given by the increment. Example: 20 move en 1:00h becomes: 20 moves in 50 minutes with the addition of 30 seconds after each move ( $1:00h - 20 \times 30s = 50$  minutes).
- 2) For a sudden death time control in a regular game, assume that the game will last 80 moves. Example: 40 moves in 2 hours followed by one hour sudden death. This will give 40 moves in 100 minutes ( $100 \text{ minutes} + 40 \times 30s = 120 \text{ minutes} = 2 \text{ hours}$ ). If we assume that the game will last 80 moves, the players will need to play 40 moves in the last time control.  $40 \times 30$  seconds is 20 minutes. 1 hours-20 minutes is 40 minutes. The final time control will be 40 moves in 100 minutes followed by the entire game in 40 minutes with the addition of 30 seconds from move one. If this formula lead to non-sense, the organiser is free to use his best judgement to establish an equivalent time control.
- 3) For rapidplay, subtract 10 minutes from the total and add 10 seconds per move.

#### *Time control to be used*

*If any of the players has a standard chess clock capable of incrementation, the use of the equivalent time control is mandatory. The players are not permitted to dispense themselves from this requirement; the increment must be used if the clock has the capability even if both players prefer traditional timing. The TDOCP may permit a tournament to ban incrementation, but the permission must be asked at least one month in advance and the fact must be mentioned in all tournament publicity.*

### *Exceptions to the normal rules*

The following exception to normal procedure applies only to large tournaments in which it is impossible to supervise play in all games: infringements of Articles 4.3 and 4.4 must be claimed by the opponent unless an arbiter witnesses a violation.

VARIATION. In a tournament with a large number of players, if the arbiter believes that the Tournament Rules of article 2.5 cannot be applied, the following procedure may be substituted for 2.5. However, written, and also, whenever possible, oral announcement must be made in advance of the first round and the same procedure must be used for all games.

No player may subtract time from a late opponent without starting a clock. If a clock becomes available after the beginning of the round, the arbiter may require that the elapsed time of the round be divided equally between the two players.

- (a) If both players are present when the round begins, they start play immediately.
- (b) If one player is absent when the round begins, play starts when the player who is present starts the clock he has brought or obtained. If he has not brought a clock and is unable to obtain one, play does not start until the opponent arrives.
- (c) If both players are absent when the round begins, play starts when the first player arrives and starts the clock he has brought or obtained. If he has not brought a clock and is unable to obtain one, play does not start until the opponent arrives.

In a large tournament, if it is impractical for the arbiter to announce the beginning of a round, players should be urged, in advance, to begin their games promptly by starting their opponents' clocks. The players should also be informed that no permission is needed to start games at the specified time if the pairings have been posted.

The following exception to normal procedure applies only to large tournaments in which it is impossible to supervise play in all games: infringements of the Laws on Recording of Games (FIDE Laws of Chess Article 8.1) must be claimed by the opponent unless the arbiter witnesses a violation.

The following exception to normal procedure applies only to large tournaments in which it is impossible to supervise play in all games; completion of scoresheets after the time control when a player, extremely pressed for time, has obviously been unable to meet the requirements of the FIDE Laws of Chess Article 8.1, is optional at the discretion of the arbiter.

A player who does not conform to the specifications of the FIDE Laws of Chess Article 9.1 when proposing a draw by agreement (FIDE Laws of Chess Article 9.1) is breaking the Laws of Chess and should be penalised or warned at the discretion of the arbiter.

### *Unsportsmanlike conduct*

It is **unethical and unsportsmanlike** to agree to a draw before a serious contest has begun. The same is true of all agreements to prearrange game results. In cases of clear violations of the **moral principles of the game**, an arbiter should impose penalties at his discretion.

It is **unethical and unsportsmanlike** to deliberately lose a game to lower your rating.

It is **unethical and unsportsmanlike** to deliberately lose a game for payment.



It is **unethical and unsportsmanlike** to lie on your rating in order to register in a tournament or a section of a tournament reserved to players of lower rating or for any other reason.

It is **unethical and unsportsmanlike** to cheat in a game of chess by illegally giving, receiving, offering, or soliciting advice; or by consulting written sources; or by tampering with clocks; or by using a computer or in any other manner.

The player who does not wish to continue a lost game and leaves without being courteous enough to resign or to notify the arbiter may be severely penalised, at the discretion of a arbiter, for poor sportsmanship.

With the permission of the Chief Arbiter and with prior approval from the CFC, in order to prevent insidious draws, the organiser may use any of the following or a combination of them

- (a) require a minimum number of moves to be played before a draw can be proposed by the players;
- (b) require a minimum time of play before a draw can be proposed by a player;
- (c) require that all proposition of a draw be approved by the Chief Arbiter. If the Chief Arbiter refuses the draw, the game must continue.

## *Appeals*

A player may appeal any ruling made by the chief arbiter or one of his assistants, provided that the appeal is promptly made after the ruling before the appellant completes another move.

The players must continue the game according to the arbiter's instructions. Usually, the chief arbiter will direct that play continue before the appeal is heard, the appellant must continue play "under protest", i.e. without prejudice to his appeal regardless of the outcome of further play. If the appellant wins the game, the appeal is moot. A game will be interrupted pending the result of an Appeal only in exceptional circumstances left to the appreciation of the arbiter.

All appeals must be put in writing within 1/2 hour of the end of the game through the chief arbiter. Any appeal not meeting these requirements is void.

If the chief arbiter believes that the appeal is justified, he may reverse or modify any previous decision made by himself or one of his assistants. If he does not believe that the appeal is justified and so advises the appellant, who nevertheless wishes to pursue the appeal further:

When an appeals committee cannot meet without disturbing the orderly progress of the tournament or when the interior rule does not mandate a local appeal committee, the chief arbiter hears and rules upon the appeal.

Otherwise, the arbiter must appoint a committee of three persons (preferably including at least two CFC Certified Arbiters) to which to refer the appeal, as specified in 5.7. The committee must consist of disinterested persons and be selected in consultation with the appellant and his opponent. If the committee finds that the appeal is clearly groundless, it may authorise the arbiter to penalise the player for that reason. The committee may either specify the penalty or leave it to the arbiter's final determination.

When an appeals committee hears an appeal, all persons except the members of that committee, the chief arbiter, the appellant, his opponent, and the testifying witnesses should be excluded from the hearing. When the committee hears an appeal it must give pre-eminent weight to the arbiter's

testimony as to anything said or done in this presence. The appeals committee's decision should be transmitted in writing to the arbiter and signed by the committee members.

An Appeal Committee has great powers that can certainly go beyond the letters of the Laws of Chess in seeking a fair solution.

### *Interior rules*

Interior rules are all the extra regulations applying to a single tournament such as time control, playing schedule, availability of byes...

The responsibility for producing the interior rules rest with the Organiser. The Chief Arbiter is acting as a technical assistant.

### *Player's Code of Conduct*

#### *Respect of the rules*

- Games shall be played according to the FIDE Laws of Chess and the CFC Tournament Rules and all CFC procedures and policies. Rules must be applied in good faith.
- The result of a game must be acquired loyally without breaking the sport ethics and cannot be the result of any negotiation. Any behaviour that is harmful to the opponent or that could bring the sport of Chess into disrepute is strictly prohibited.
- The offer of a draw is always unconditional. Draw by agreement cannot occur for reasons outside of the sport context and must occur after a real fight on the chessboard.

#### *Respect of the opponent*

- Respect of the opponent implies that a player must refrain from playing using illegal means, outside sources of information or cheating.
- It is forbidden to distract or annoy the opponent in any manner whatsoever.
- It is mandatory to speak to the opponent in a courteous and polite manner.

#### *Respect of the arbiter*

- By participating in a CFC rated event, the players accept to play under the authority of an arbiter having all the necessary authority to enforce the rules.
- The arbiter is an official representative of the CFC of the tournament site. He is responsible for the enforcement of the rules and for ensuring good sportsmanship of the participants.
- Faced with an arbiter's ruling during play, a player must obey. He may appeal the ruling orally but should put the appeal in writing as soon as possible. The details on how to appeal shall be given by an arbiter.
- Each player must concur to the application of the rules.

#### *Respect of the organiser*

- Each player must concur to the good organisation of the competition.
- The registration in a tournament implies the acceptance of the internal rules of this tournament that must be posted in the playing area.
- A claim against the organiser will be accepted only if it is formulated in a correct manner.

### *Penalties*

Any player who fails to abide by this Code of conduct may receive penalties from the arbiter and disciplinary penalties from the CFC, or one of its provincial affiliates.

#### *Penalties imposed by an arbiter*

In case of a dispute, the arbiter should make every effort to reach a resolution of the matter by informal, conciliatory means before he resorts to the exercise of his formal discretionary power to penalize. If such means fail, where penalties are not specifically defined by the FIDE Laws of Chess or the

Tournament Rules, the director has discretionary power to impose penalties as follows for infractions and maintenance of discipline:

- a) issue a formal warning;
- b) issue a formal written warning;
- c) fine a player any amount not to exceed \$100.00 payable to the sponsoring organization (the player should not be permitted to continue play in the tournament and may be barred by the sponsoring organization from any of its tournaments until the fine is paid);
- d) advance the time on a player's clock or give his opponent additional time;
- e) cancel a game and rule that a new game be played in its stead;
- f) declare a game lost by a player and won by his opponent;
- g) declare a game lost by both players;
- h) expel a player from the tournament.

### *FIDE Standards for digital Chess clocks*

The requirements for electronic clocks are given below:

1. Clocks must function in full accordance with the FIDE laws of chess.
2. Clocks must function in a way that the use of different clock types (analogue and digital) can be combined in one tournament.
3. Special attention should be given to the correct implementation of passing time controls.
  - a. Both players should have the same amount of time for the same amount of moves.
  - b. In display should at all times be visible the time that is available to complete a player's next move.
4. Clocks must be well designed according to modern electronic standards.
5. Clocks must contain a short user manual on the clock.
6. For battery powered clocks, a low-battery indication is required.
7. In case of a low-battery indication, a clock must continue to function flawlessly for at least 10 hours.
8. Displays must be legible from a distance of at least 3.5. meters (Formula: display height x 300, taking in account a straight line of vision towards the display).
9. From at least a 10 meter distance a player must have a clearly visible indication which clock is running.
10. In case of passing a time control, a "flag" must give clear signal which player passed the time limit first.
11. In case of accumulative or delay timing systems, the clock should not add any additional time if a player passed the last time control.
12. It must be impossible to erase or change the data in display with a simple manipulation.
13. In case of e.g. time penalties, it must be possible that time and move counter corrections are executed within 60 seconds.

## Motions for Final Vote:

**Motion 2008-01: Moved (*Pierre Dénommée / Lyle Craver*)** That the CFC Handbook Tournament Rules section be replaced as per Appendix 1 (see below)

Motion 2008-01a: Article 1	(Administrative Rules)
Motion 2008-01b: Article 2.1 to 2.26	(Additional Rules for Tournament Play)
Motion 2008-01c: Article 2.27 to 2.29	(Regulations re Clocks and Time Controls)
Motion 2008-01d: Article 3	(Exceptions to the Normal Rules)
Motion 2008-01e: Article 4	(Unsportsmanlike Conduct)
Motion 2008-01f: Article 5	(Appeals)
Motion 2008-01g: Article 6	(Interior Rules)
Motion 2008-01h: Article 7	(Players' Code of Conduct)
Motion 2008-01i: Article 8	(Penalties Imposed by the Arbiter)
Motion 2008-01j: Article 9	(FIDE Standards for Digital Chess Clocks)

**NOTE: Governors have the option of voting either**

**a) 2008-01      Vote Yes      No      Abstain**

**-OR-**

**b) to vote the subsections individually. Governors voting under option “a” should realize that they are voting the same way on ALL subsections**

Motion 2008-01a: Article 1	<b>Vote Yes</b>	<b>No</b>	<b>Abstain</b>
Motion 2008-01b: Article 2.1 to 2.26	<b>Vote Yes</b>	<b>No</b>	<b>Abstain</b>
Motion 2008-01c: Article 2.27 to 2.29	<b>Vote Yes</b>	<b>No</b>	<b>Abstain</b>
Motion 2008-01d: Article 3	<b>Vote Yes</b>	<b>No</b>	<b>Abstain</b>
Motion 2008-01e: Article 4	<b>Vote Yes</b>	<b>No</b>	<b>Abstain</b>
Motion 2008-01f: Article 5	<b>Vote Yes</b>	<b>No</b>	<b>Abstain</b>
Motion 2008-01g: Article 6	<b>Vote Yes</b>	<b>No</b>	<b>Abstain</b>
Motion 2008-01h: Article 7	<b>Vote Yes</b>	<b>No</b>	<b>Abstain</b>
Motion 2008-01i: Article 8	<b>Vote Yes</b>	<b>No</b>	<b>Abstain</b>
Motion 2008-01j: Article 9	<b>Vote Yes</b>	<b>No</b>	<b>Abstain</b>

**Motion 2008-02 CFC Web Site (Patrick McDonald / Chris Mallon)** To approve the development of a new CFC website and automated ratings system as shown in appendix. Exact dates may be negotiated by the new CFC Executive for cash flow purposes. (*This is the re-introduction of motion 2007-12 originally moved by Chris Mallon*)

**Vote Yes      No      Abstain**

**Motion 2008-03 (Lyle Craver / Bob Gillanders)** That Handbook paragraph 1206 (b) dealing with the Canadian Olympic team be amended to read:

**(b) National Team:** The National Team shall consist of FIVE players, as follows:

- (i) The Canadian Champion, as of 180 days before the start of the Olympiad.
- (ii) The TWO highest rated players on the Selection Rating list.
- (iii) Two players decided upon by the Selection Committee.

**Vote Yes      No      Abstain**

**Motion 2008-04 Governors' Letter (Lyle Craver / Bob Gillanders)** That Handbook paragraph 340(b) be deleted. This paragraph reads:

“b) If the Executive Director submits a Governors Letter to the President for approval and does not receive a revised Governors Letter from the President, or approval, within three weeks, then the Executive Director does have de facto approval, and must send out the Governors Letter. [ref: Motion 89-17; GL, September 1988, p. 1-30 of Appendix B]”

Vote Yes      No      Abstain

**Motions for Second Discussion:**

**Motion 2008-06** ( Bond, McDonald) Changes to CFC Fee Structure

**Motion 2008-07:** (Bond, Craver) Changes to Rating Fee Structure for “Junior Only” events.

**Motions for First Discussion: none**

**Deadline for submissions to GL#3 is Friday November 9th, 2007**

**Responses may be mailed, faxed or E-mailed to the Chess Federation of  
Canada, E-1 2212 Gladwin Crescent, Ottawa, ON, K1B 5N1  
fax: 613-733-5209, E-Mail: [info@chess.ca](mailto:info@chess.ca)**